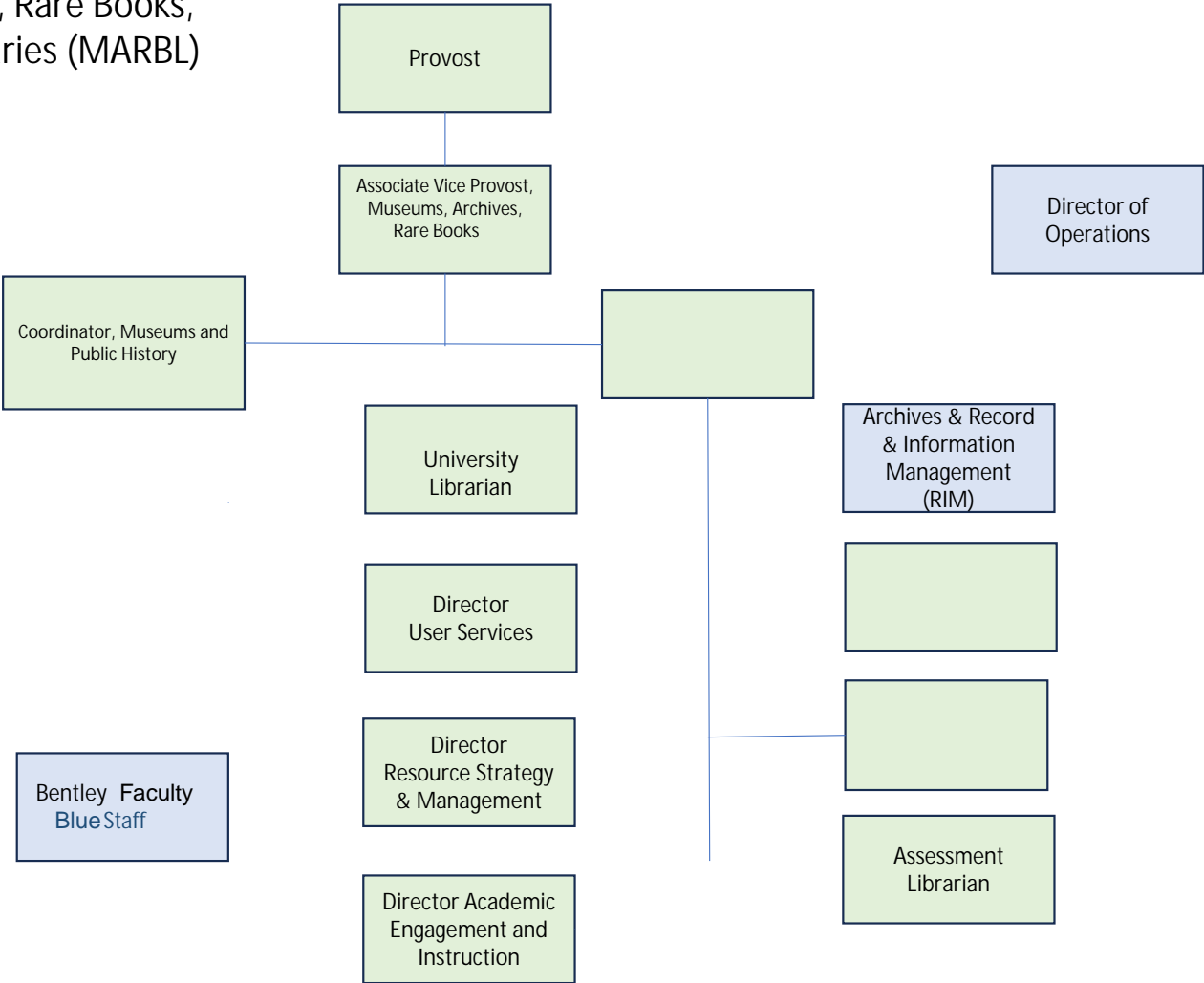


Museums, Archives, Rare Books, and University Libraries (MARBL) Administration

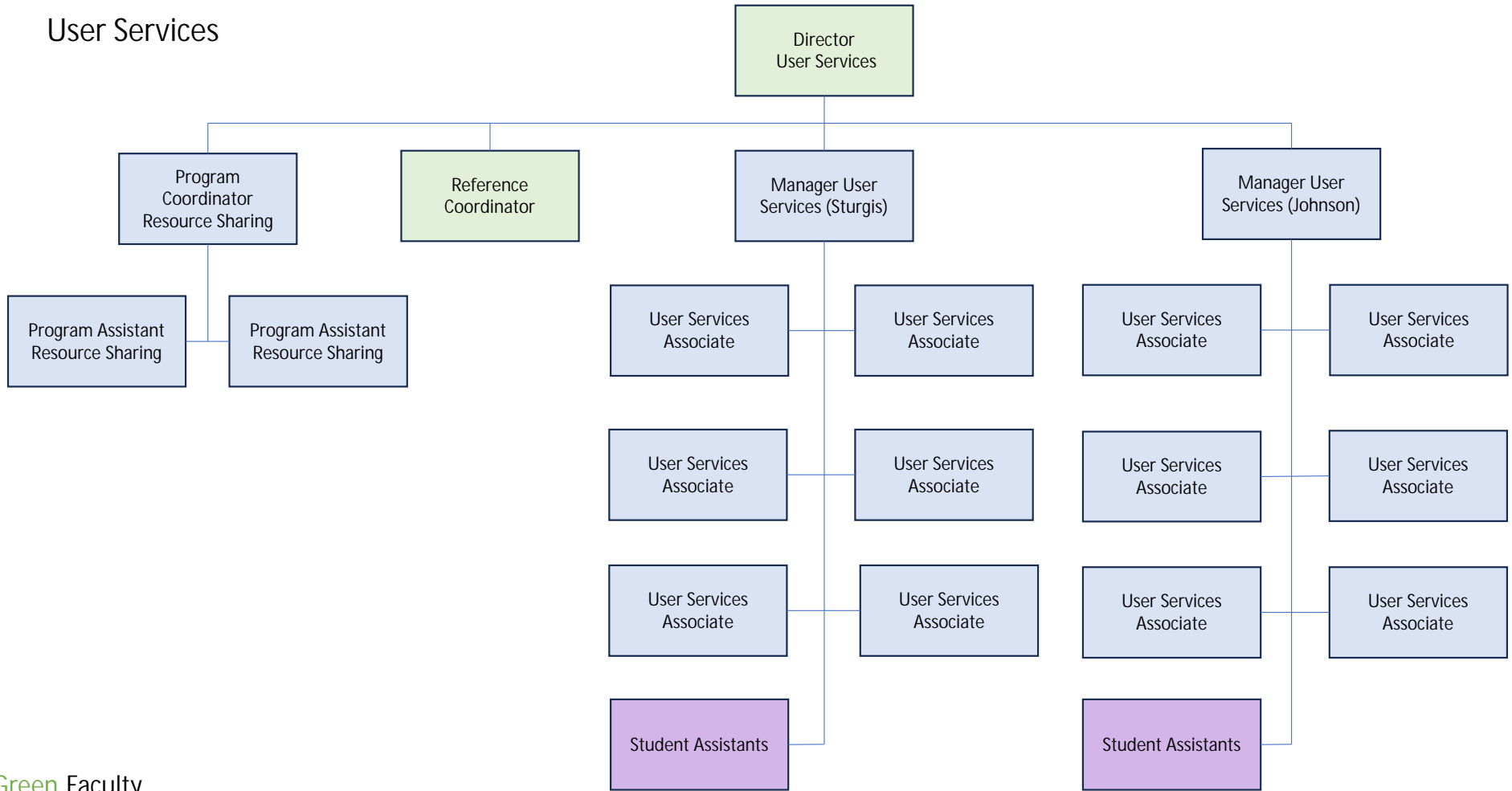


Director of
Operations

Budget Manager
(Reports to Fiscal
Services)

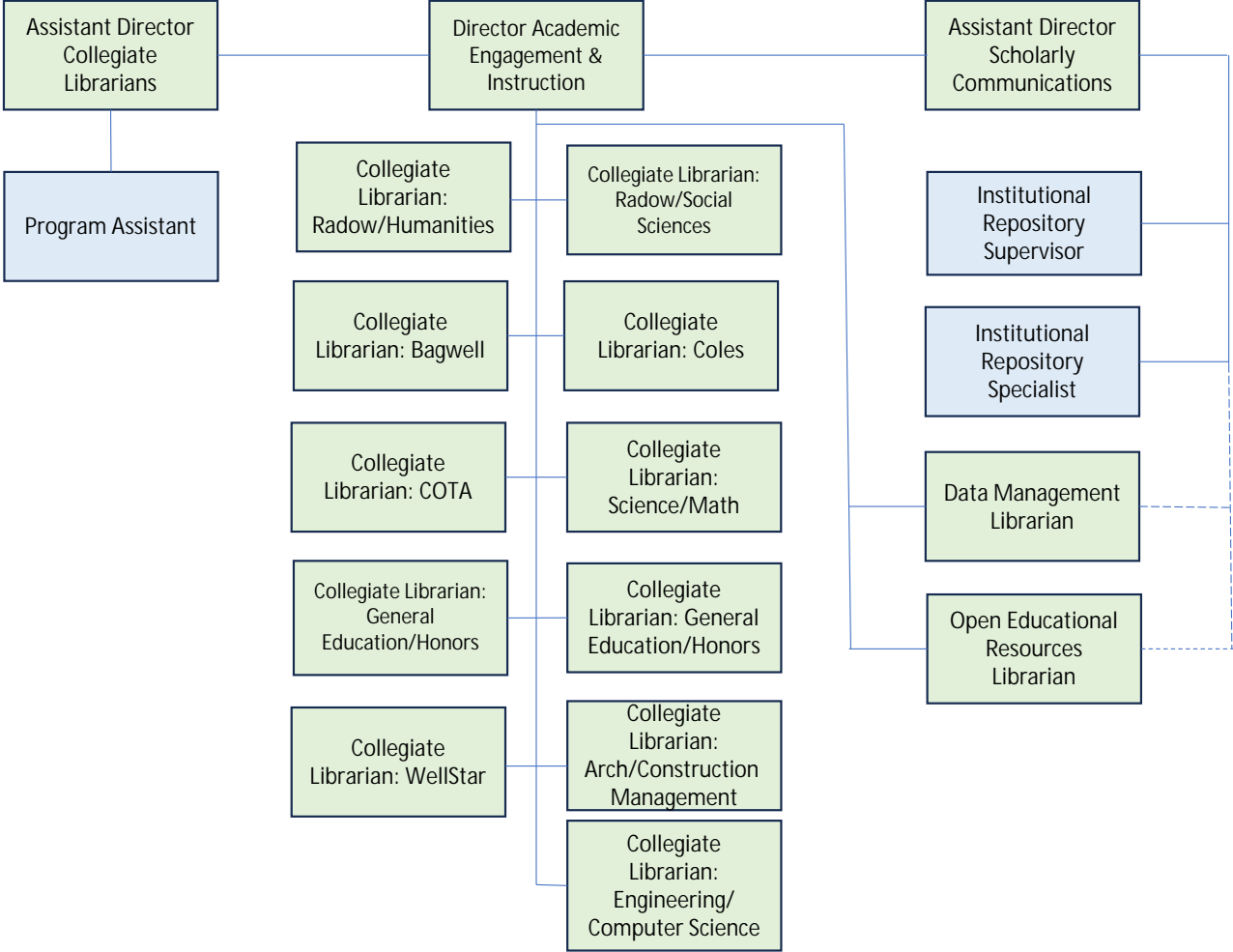
Exhibit Special Tj/TT21 Tfr 2020

User Services



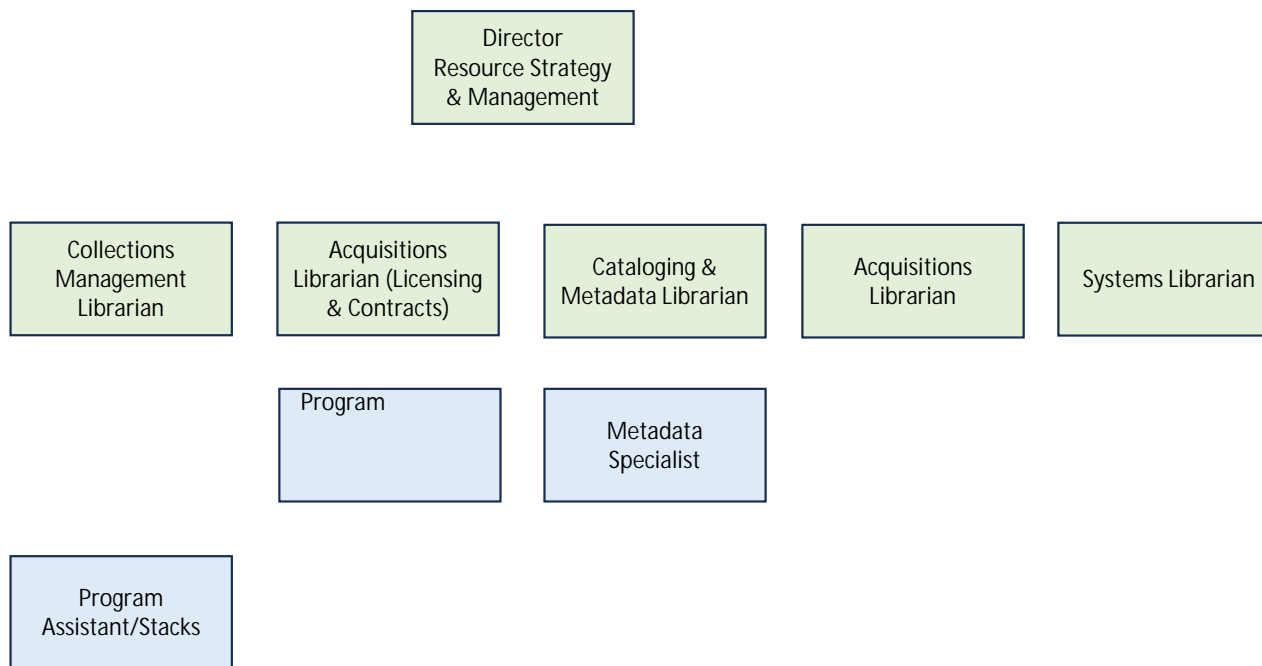
Green Faculty
Blue Staff
Purple Student Assistants

Academic Engagement & Instruction



Green Faculty
Blue Staff

Resource Strategy & Management



Museums

Coordinator,
Museums and Public
History

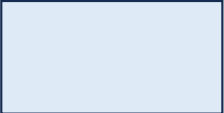
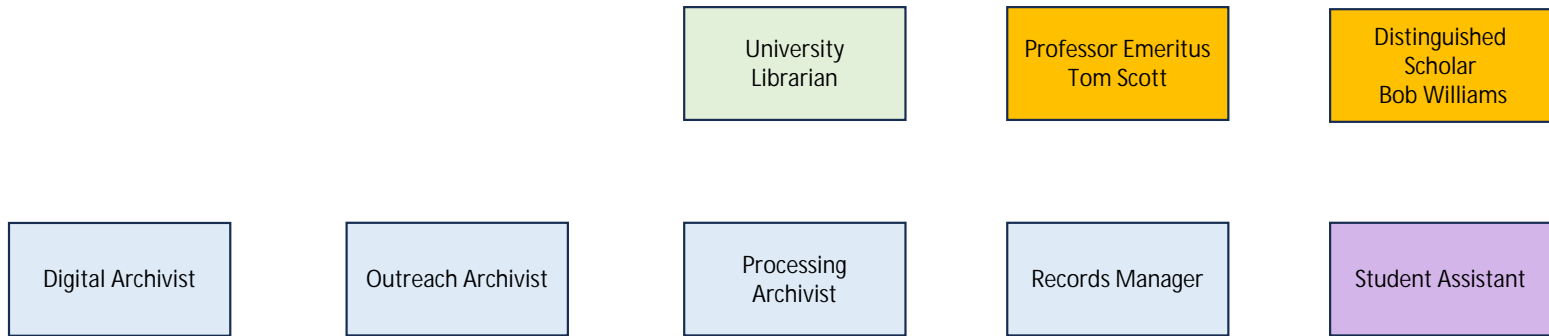


Exhibit Logistics
Specialist and
Museum Educator

Museum Educator

Archives & Records Management



Green Faculty